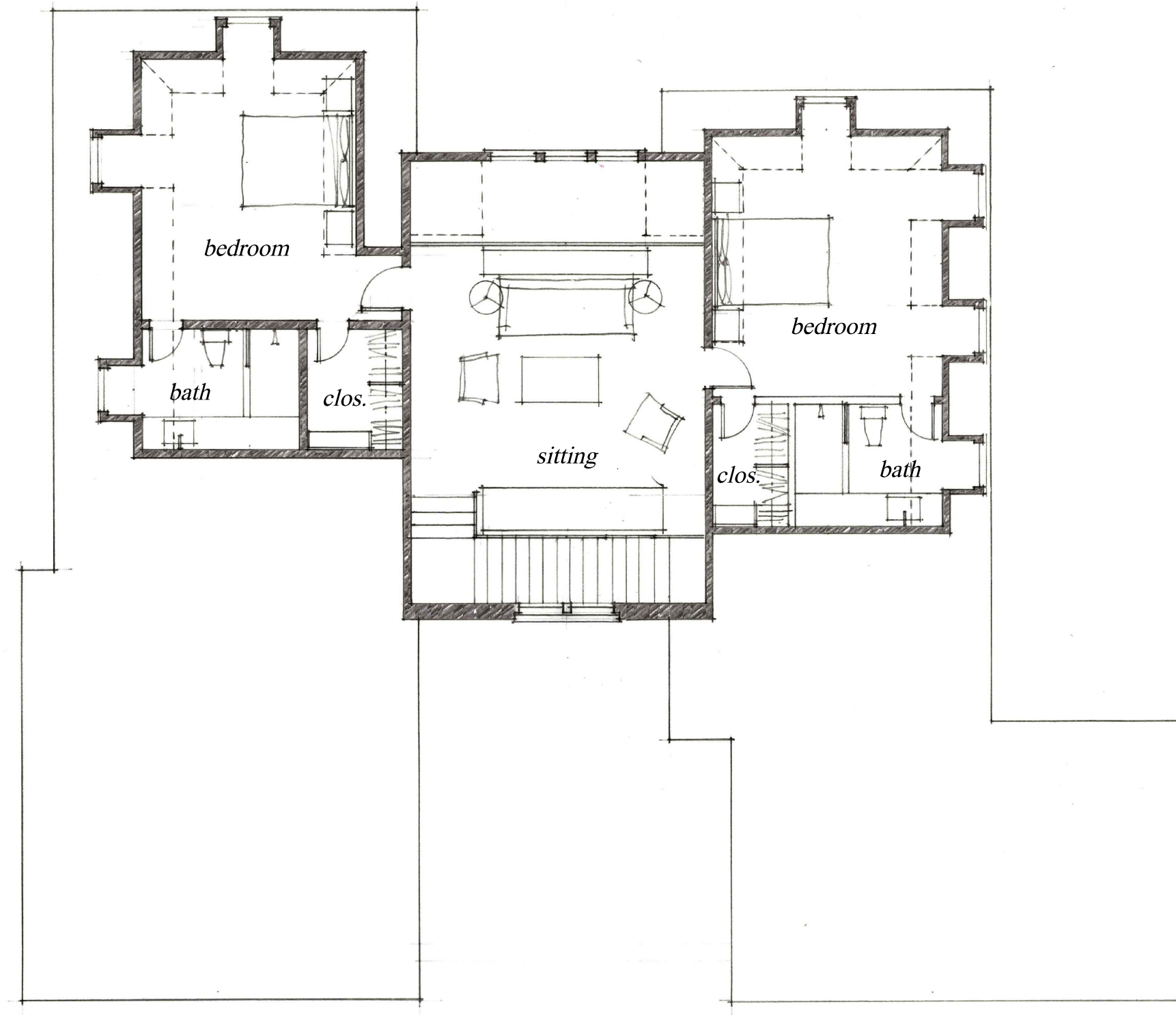


*a new house II for  
Elmhurst Court  
first floor plan  
1/8" = 1'-0"  
September 22, 2015*



*a new house II for  
Elmhurst Court  
second floor plan  
1/8" = 1'-0"  
September 22, 2015*



*a new house II for  
Elmhurst Court  
elevations  
1/8" = 1'-0"  
September 22, 2015*