

SQUARE FOOTAGE:

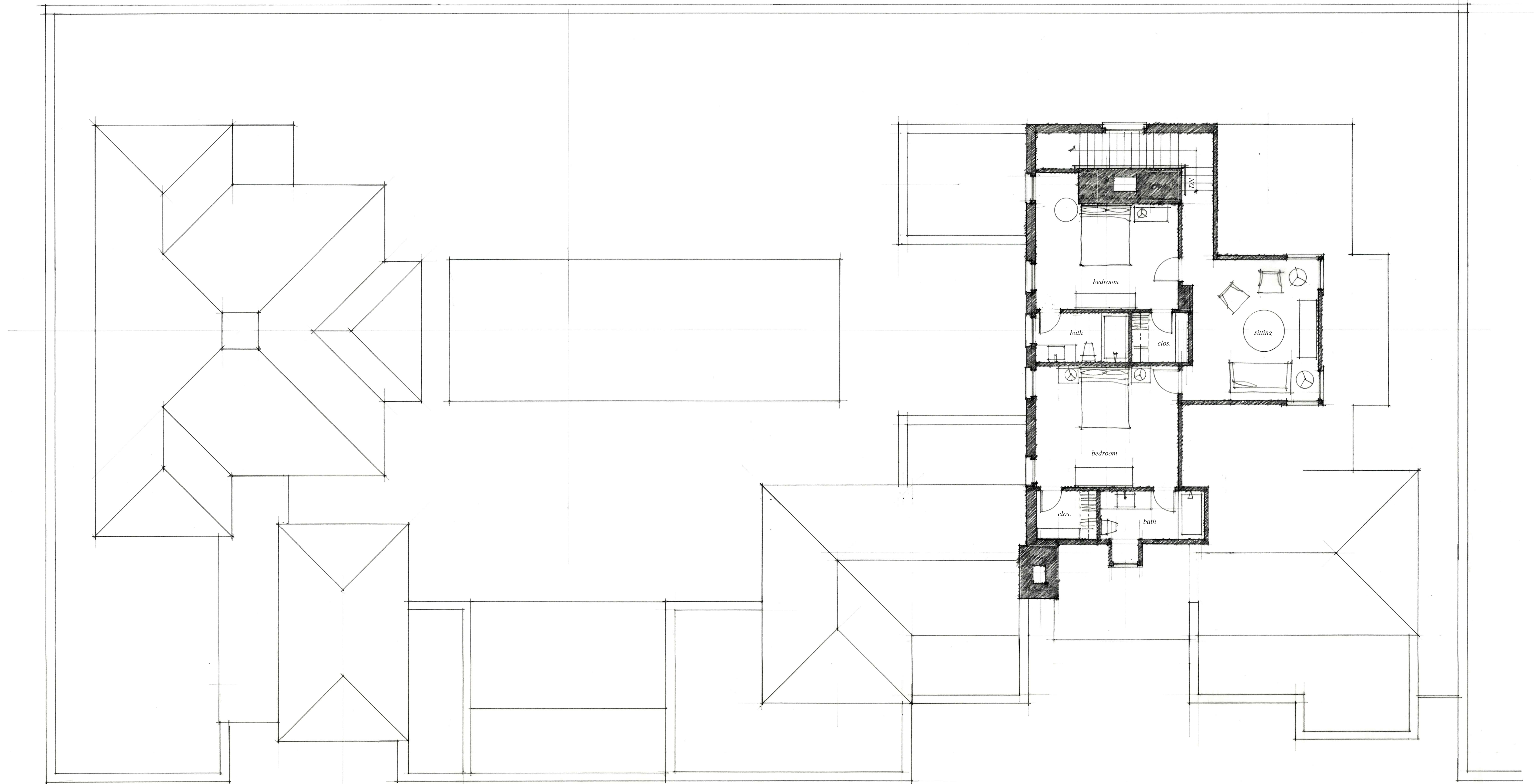
main level conditioned	2728
upper level conditioned	1001
guest house conditioned	1318
total conditioned	5047
porches and breezeway	822
garage and storage	665
guest garage and storage	472
total unconditioned	1955

DUNNING RESIDENCE

first floor plan

$\frac{3}{16}" = 1'-0"$

August 16, 2016

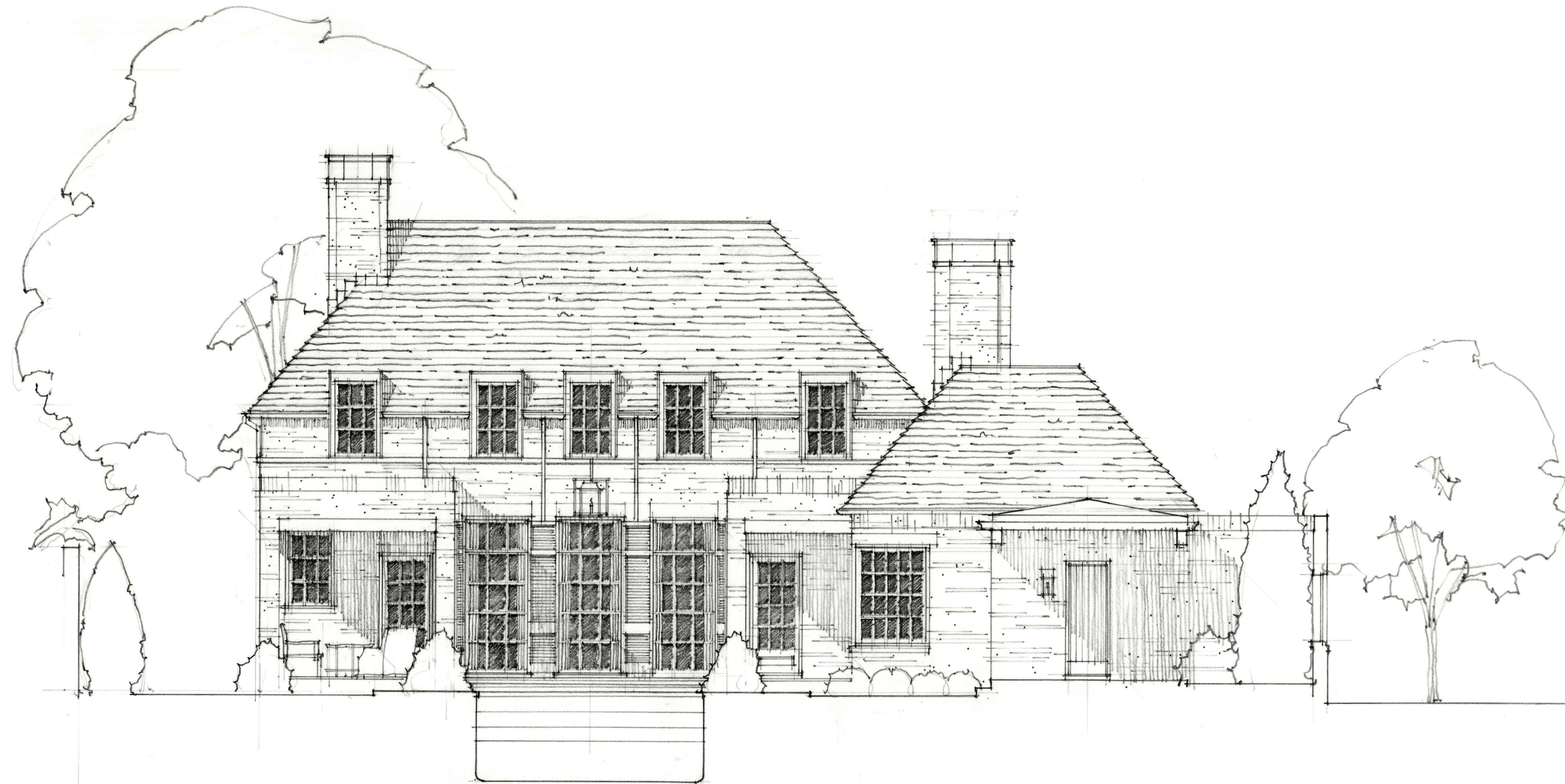


DUNNING RESIDENCE

second floor plan

$\frac{3}{16}'' = 1'-0''$

August 16, 2016



DUNNING RESIDENCE

elevations

$\frac{3}{16}'' = 1'-0''$

August 16, 2016